

## KIER SCOTLAND – NORTH EAST

### RVI HOSPITAL – NEWCASTLE UPON TYNE

**BRIEF:** To provide modular office/welfare facilities for Kier Scotland North East Staff and Contractors during major works at Newcastle’s RVI Hospital

**SCALE:**

Size: 40 x 30’ 2 storey Timescale: 57 week project

**BUILDING USE:** Modular building incorporating office and welfare facilities including canteen, drying room, induction and drug testing room and w/c.

**CHALLENGES:**

During deliveries we had to ensure procedures were in place, as we had to share a live blue light lane route for emergency ambulances access.

Access and egress - all transport had to be banked into location taking into consideration we had the issue stated above regarding the access route.

Due to the proximity of the air ambulance helipad, measures were put in place by our contractor and followed by SiBCAS lifting team. This included ceasing all lifting duties and lowering the jib in the event of an emergency, during the installation with the mobile crane.

These works in a tight and complex location, were to be completed in a very strict timescale.

**OUTCOME:**

Modular units were delivered and installed with no issues and completed within client’s time scale.

**TESTIMONIAL:**

*From Inception to completion, engaging SiBCAS for the installation of the accommodation was managed and completed to a very high standard by the SiBCAS team. SiBCAS worked collaboratively with our team, to ensure no disruption to our clients - NHS Services at RVI Hospital - primary access routes for air ambulance and A&E ambulances. Thanks to all involved at SiBCAS. N Carson – Kier Construction*

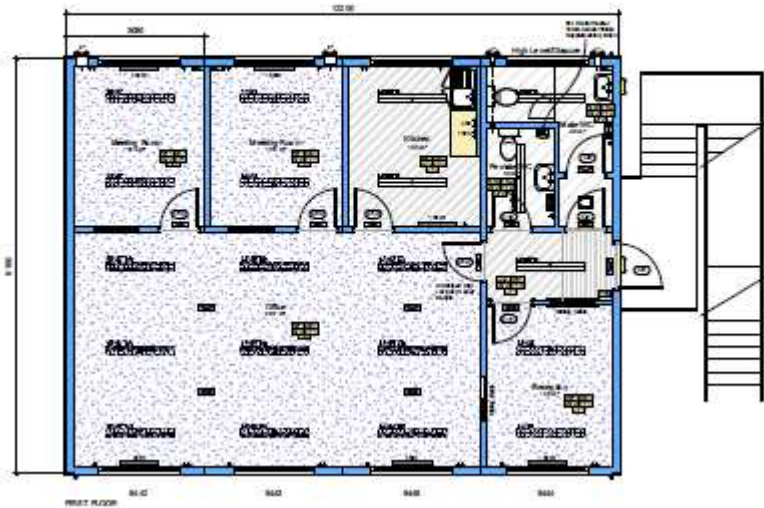


flexible modular accommodation

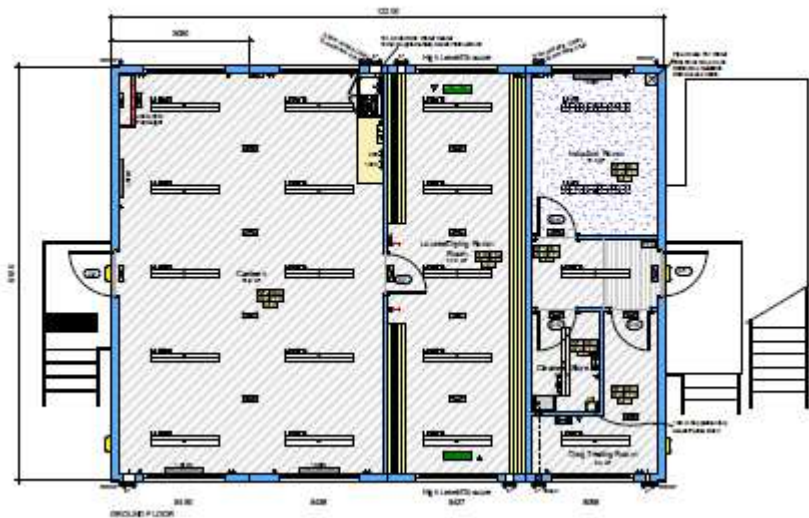




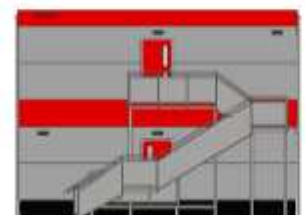
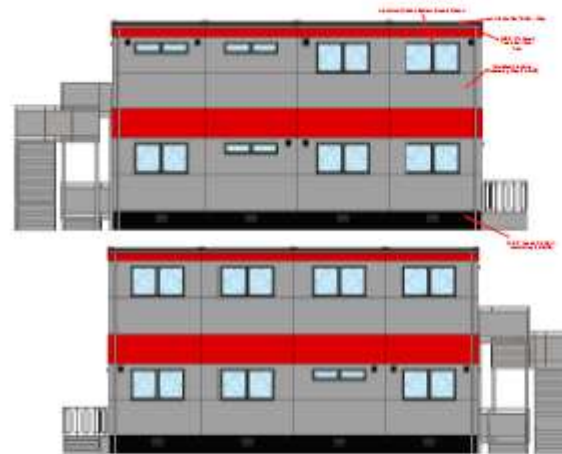




FIRST FLOOR



GROUND FLOOR



NO.	DESCRIPTION
1	...
2	...
3	...
4	...
5	...
6	...
7	...
8	...
9	...
10	...
11	...
12	...
13	...
14	...
15	...
16	...
17	...
18	...
19	...
20	...
21	...
22	...
23	...
24	...
25	...
26	...
27	...
28	...
29	...
30	...
31	...
32	...
33	...
34	...
35	...
36	...
37	...
38	...
39	...
40	...
41	...
42	...
43	...
44	...
45	...
46	...
47	...
48	...
49	...
50	...